

INTERNATIONAL BUSINESS MACHINES CORPORATION
ENGINEERING SPECIFICATIONS

NAME IBM NPN Transistor Type 58

No. 895470

No. OF SHEETS 5 SHEET 1

4-24-56

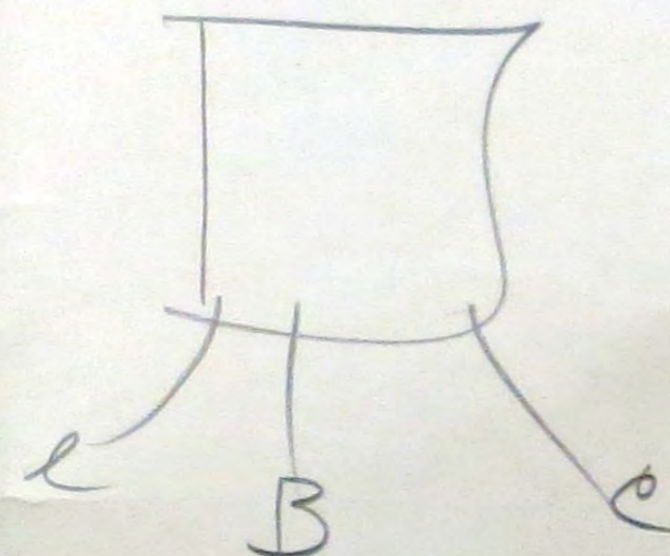
DATE

WHERE USED

REFERENCE
Fig. Drawing

TABLE OF CONTENTS

<u>Paragraph</u>		<u>Page No</u>
1.0	Description	2
2.0	Capping	2
3.00	Electrical Testing	2
3.01	Ambient Temperature	2
3.02	Instrument and Circuit Tolerances	2
3.03	Parameter Stability	2
3.04	V _{pt} - Punch through voltage	2
3.05	I _{co} -Collector cutoff current	3
3.07	I _{eo} -Emitter cutoff current	3
3.08	I _{bc} -Collector current	4
3.09	I _{ec} -Emitter current	4
3.11	V _{ce} -Collector to emitter voltage	4
	V _{be} -Base to emitter voltage	4
3.13	f _{co} -Alpha cutoff frequency	4
6.00	Marking	5
6.01	Numbering	5
6.02	Collector lead identification	5



ENG. CHANGE	DATE	5-24-56	201249						MADE BY	APPD. BY	DATE TYPED
	NO.	201138	10-9-561p						RSS	JDJ	4-24-56

INTERNATIONAL BUSINESS MACHINES CORPORATION
ENGINEERING SPECIFICATIONS

No. 895470

NAME _____ NO. OF SHEETS _____ SHEET 2

RE USED _____ DATE 4-24-56

REFERENCE

Fig. Drawing

- 1.0 Description
This specification covers a NPN transistor.
- 2.0 Capping
Cap should be secured to transistor in such a manner as to obtain hermetic sealing.
- 3.00 Electrical Testing
 - 3.01 Unless otherwise stated electrical testing should be performed at 25±3 degrees centigrade. Temperature tolerance to be +3°C.
 - 3.02 Instrument tolerances on voltages and currents will be +2 per cent. Circuit components such as resistors and capacitors will be within 2 percent of rated values unless otherwise specified.
 - 3.03 Reasonable precautions will be observed to insure that the parameter being measured has stabilized before readings are taken.
 - 3.04 The magnitude of the collector to base voltage which causes collector to emitter punch through should be 15.0 volts minimum and should be positive. The magnitude of this voltage is determined as shown below and is defined as the intersection of the sloped line with the emitter voltage equals zero axis.

ENG. CHANGE	DATE	5-24-56							MADE BY	APPD. BY	DATE TYPED
	NO.	201138							RSS	JDJ	4-24-56-m

INTERNATIONAL BUSINESS MACHINES CORPORATION
ENGINEERING SPECIFICATIONS

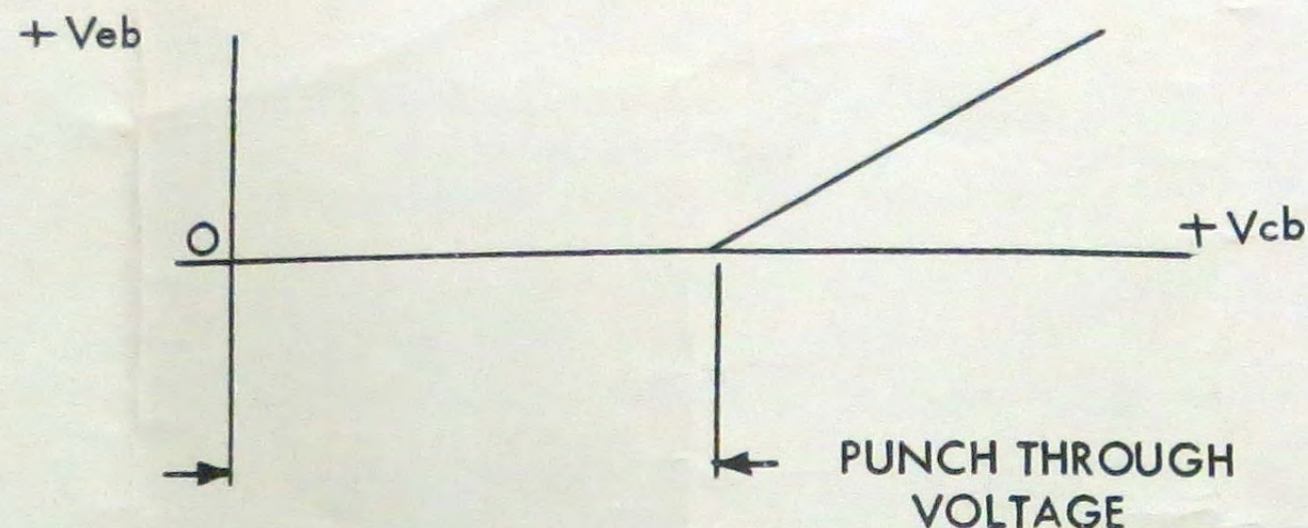
No. 895470

NAME _____ NO. OF SHEETS _____ SHEET 3

WHERE USED _____ DATE 4-24-56

REFERENCE

Fig. Drawing



Impedance of the emitter test probe will be 1.0 megohm minimum.

- 3.05 The collector cutoff current should be positive and its magnitude should be less than or equal to 50 microamperes when measured at a junction temperature of 55 degrees centigrade with the emitter open circuited and the collector to base voltage set at +5.0 volts.
- 3.07 The emitter cutoff current should be positive and its magnitude should be less than or equal to 50 microamperes when measured at a junction temperature of 55 degrees centigrade with the collector open circuited and the emitter to base voltage set at +5.0 volts.

ENG.	DATE	5-24-56	10-9-56						MADE BY	APPD. BY	DATE TYPED
CHANGE	No.	201138	201249						RSS	JDJ	4-24-56

**INTERNATIONAL BUSINESS MACHINES CORPORATION
ENGINEERING SPECIFICATIONS**

No. 895470

NAME _____

No. OF SHEETS _____

5

SHEET _____

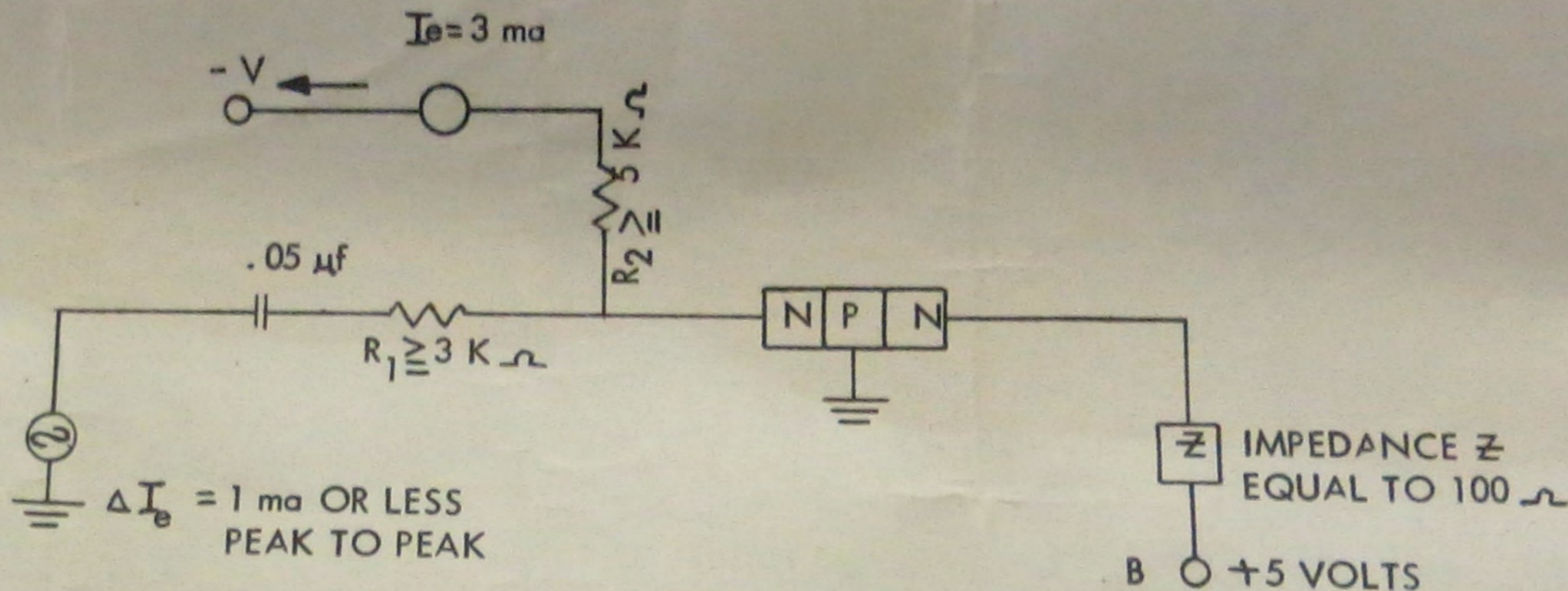
5

DATE _____

4-24-56

ERE USED _____

ERENCE
Drawing



Alternating current impedance of power supply "B" at frequencies applied will be 10 ohms maximum.

6.00

Marking

6.01

For identification purposes each transistor will be durably marked with its type and production lot number.

6.02

Collector lead will be positively identified.

ENG. CHANGE	DATE NO.	5-24-56 201138	10-9-56 201249							MADE BY	APPD. BY	DATE TYPED
										RSS	JDJ	4-24-56-m